

A scenic sunset over a lake. The sun is low on the horizon, creating a bright starburst effect and reflecting on the water. In the foreground, there are dark, jagged rocks and some green plants. Two white motorboats are docked at the shore. The boat on the right has a red canoe and a bicycle on its deck. In the background, there are hills and a few people sitting on the shore near a tent. The sky is a mix of blue and orange.

**THE ADVENTURE
YOU'VE BEEN
WAITING FOR**

AXOPAR

LIVE YOUR ADVENTURE TOGETHER WITH US

We live to explore beyond. Our passion for the outdoors empowers you to discover places you never knew existed, to experience nature at its purest and to break new ground. With Axopar it's all about where our boats can take you on your voyage, for you to experience more on your journeys, and for those not choosing the most direct route.

Boating is all about freedom and the joy of discovery. We, at Axopar, want to inspire you to explore and expand your adventures; and nothing inspires us more in return, than seeing our boats on the water, creating excitement and life-long memories amongst our owners.

Whether it be rediscovering your local surroundings and scouting beyond your regular moorings in search for that hidden beach, finding a secluded trail or exciting diving spot you never knew existed, or relaxing with your family in the afternoon sun to simply escape your normal routine, our boats exist to enrich your everyday life.

We take you there!



ONE WITH NATURE

*"WHEN WE SLOW DOWN
NATURE REVEALS HER
TRUE BEAUTY AND POWER"*



NORDIC CRAYFISH PARTY

*"PRECIOUS MOMENTS SHARED
WITH FRIENDS BECOME
A LIFETIME OF MEMORIES"*



AXOPAR ADVENTURES

Here we have gathered a selection of our Axopar adventure videos for you to enjoy.

Scan the QR code next to each story using your mobile device to watch the video, or visit our website at www.axopar.fi for a full portfolio of adventure stories.

/ HÖGA KUSTEN, SWEDEN



FISHING WITH FRIENDS

*"THERE'S NO LOSING IN
FISHING. YOU EITHER
CATCH OR YOU LEARN"*



A KITE SURFER'S KICK

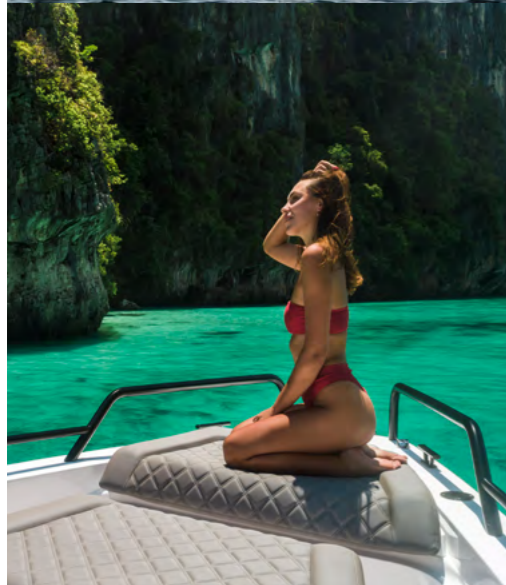
*"WHERE THERE IS WIND, THERE'S
A THRILL OF ADVENTURE AND
A FEELING OF FREEDOM"*



GET INTO GEAR

*"BETWEEN MOUNTAINS AND
HILLS THERE ARE ENDLESS
ADVENTURES TO BE EXPLORED"*







The Axopar range is the result of our lengthy experience and passion for boating. Designed and developed by true boating enthusiasts for the quality conscious boater who wants to explore further.

THE AXOPAR 37 RANGE

GO FURTHER ON
YOUR JOURNEYS

Axopar 37 XC Cross Cabin Page 12

Axopar 37 Sun-Top Page 20

Axopar 37 Spyder Page 28



AXOPAR 37 XC CROSS CABIN

The new Crossover that challenges convention in both looks and onboard functionality, bringing a new era to all-weather boating.

The Axopar 37 XC Cross Cabin takes you further on your journey, whether it be in the harsh cold seas of Svalbard, in the sunny and warm Caribbean or surrounded by the bustling streets and stunning skyline of Manhattan. Every centimeter on board is used for socialising and practical living; indoors and now outdoors as well, infused with myriad new onboard solutions and functionalities, no matter if cruising along or spending time at anchor.

Forget the old prejudice that a cabin boat is only about spending time inside its cabin; the new Axopar 37 XC Cross Cabin raises the importance and functionality of the outer spaces to make them equally as sociable and practical as the comfortable inside spaces. The innovative Gullwing Door concept* opens up the front cabin, and the sociable foredeck seating with table* or large sun-deck*, in addition to versatile aft-deck modules, ensure our customers get a boat with the equipment they want, however they spend their time onboard and wherever they are boating.

The Axopar 37 XC Cross Cabin is the perfect platform for every adventure at sea.

**Sold as optional equipment*



A large windscreen and side windows provide excellent all-around visibility, giving full panoramic views when enjoying memorable moments inside the cosy cabin. The L-shaped sofa and table in the rear of the cabin form a perfect place to socialize and entertain guests.



The bow is a perfect place to socialize with friends and family in the open air, where the seating area with optional fixed sundeck can be utilized for sunbathing and relaxing. You can find an openable, lockable storage box under the sunbed.



Picture presented with optional Comfort Package.





Picture presented with optional Comfort Package.



The spacious optional aft cabin comfortably sleeps two persons. Upgrade the aft cabin's looks and style by choosing an optional Comfort package.

Extend your comfort onboard with cooking possibilities inside the cabin. The optional fixed kitchen module comprises a foldable tabletop, three drawers for storing utensils and cutlery, sink, tap and optional induction or gas cooker.



AXOPAR 37 SUN-TOP

The Axopar 37 Sun Top, with its multi-purpose characteristics, immediately proved itself to be a perfect combination of open and enclosed boating when it launched in 2016.

The new 37 ST version, however, is loaded with myriad innovative functionality and creature-comforts. The extended roof offers the best shade and weather protection possible; this without compromising on the space and versatility of the walkaround sides and aft-deck area. The optional new roof-rack and multi-storage compartment give you the possibility to bring and transport all your adventure gear with you.

Of course, the 37 ST has more than enough versatility for enjoying all day long hospitality and all kinds of water-sports fun, but to mix the perfect boating cocktail just add friends and family. It is in every way a long-distance comfortable passage-maker. Its impressive driving characteristics, enclosable*, protected helm and clever design all allow for even wider, multipurpose usability and comfort.

**Sold as optional equipment*



Seven comfortable sports seats, which rotate and are length adjustable, form a large sociable seating area together with the extendable dining table. It's a perfect place to entertain guests and enjoy a meal, or just relax away from the hot sun.

The extended roof offers weather protection when needed, and by opening the large sliding canvas roof you can enjoy sunshine in the entire helm and cockpit area.



Gullwing doors redefine how an enclosed front cabin can be best utilised to provide a more sociable feeling and encourage full interaction with one's surroundings, making the front cabin feel like it's part of the outdoors.



If you want to stand out from the crowd, choose the optional BRABUS Line Trim package, and if you want to take your boat's looks a step further, opt for the cool and unique BRABUS Line Miami Blue colour upgrade.





The built-in electric flush toilet, with 70L septic tank, is easily accessible under the L-sofa in the front cabin.



Picture presented with optional Comfort Package.



The large optional Multi Storage compartment on the aft deck enables you to bring all of your adventure gear with you, on all of your journeys.





AXOPAR 37 SPYDER

You love the feeling of driving a very competent, open speedboat with fantastic grip and handling, which provides an extremely compliant ride. You prefer the wind in your hair, having great allround visibility, and the opportunity to be at one with your surroundings.

The Axopar 37 Spyder is a trendsetter; an exciting dive-excursion boat, a wakeboarding or water-ski boat, and your true playmate for blasting offshore, letting you enjoy the user-friendly characteristics and safe, responsive nature. The Spyder features a functional walkaround deck, with plenty of aft-deck space, and a huge multi-functional storage solution, combined with sun-deck*. The Axopar 37 Spyder is also the perfect choice for use as a tender or chase boat for superyachts. It's fast, safe and fun to drive, and it's easy to dock and store due to its low height and weight, compared to other 37 footers!

The Axopar 37 Spyder is a true competitor to RIBs and open speedboats, but with so much more space for socialising, safer passages and extraordinary comfort. The Spyder is a boat that keeps on giving, not just for high-speed pleasure and undiluted fun, but one that will satisfy the senses, even when lying at anchor with an easily mounted, light-weight sun-shade providing shelter from the sun in the cockpit area.

**Sold as optional equipment*



The driver-focused ergonomic helm, with its clean and uncluttered dashboard, ensures the skipper will always remain confident and in control when handling the boat, even single-handed.

An optional Glass Helm Simrad Information Display 2 x 12" is available, with fully customized, innovative, driver-focused user interface. This includes integrated vessel startup check, and eco/sport driving modes with active driving assistant features. The entertainment and media is controlled and monitored via the intuitive single-touch glass display.



A fully enclosed Toilet compartment is available as an option in the forward cabin, with frosted separation wall. Utilizing this solution, the forward cabin is split into a lounge and an accommodation area, with a separate toilet and shower cabin, which improves comfort and privacy onboard.



Picture presented with the optional enclosed Toilet compartment and optional Comfort Package.



The standard toilet bowl is moved to the starboard side, mounted transversely in the optional Toilet compartment.



Optional Toilet compartment is further upgradable with an optional Shower.



The walk-around layout, with optional side rails and enclosed passageways, makes for easy, functional moving around onboard and provides a safe environment for both young and old passengers.



The spacious fore deck, with seating arrangement and table, is a perfect place to socialize with family and friends for a quick snack or lunch.

The large anchor box in the bow will hold the anchor, fenders and ropes easily, as well as other equipment you need for your journey. The optional Anchor Hatch Cushion creates additional seating for up to two persons.

If you desire additional seating for your guests, the Aft Deck Folding Seats are a great option for increased comfort and convenience on the water.

The optional Wet Bar package gives you full access to a refrigerator, sink and more storage on the aft deck. You can further upgrade your Wet Bar with an optional gas grill, which allows you to cook your favourite dinner on board in the open air.



Picture presented with optional Comfort Package.



Picture presented with optional Wet Bar package and further upgradeable Gas Grill and Aft Deck Folding Seats.

37 RANGE SPECIFICATIONS

TECHNICAL SPECIFICATIONS

Overall Length (excl. Engine)	11,5 m / 37ft 9in	Berths	2 (+2)* persons
Overall Length incl. Bathing Platforms	3,35 m / 9ft 8in	Fuel capacity	730 liters / 193 gal
Beam	3,35 m / 11ft	Construction	GRP
Height (Waterline to Roof incl. Light Mast)	2,83 m (9ft 3in)	Classification	B - Offshore / C - Coastal
Draft to props	0,80 m (2ft 8in)	Max speed range	38-48 kts
37 Spyder - Weight (excl. Engine)	1770 kg (3902lbs)	Outboard engines	2 x 225 - 2 x 350hp
37 Sun-Top - Weight (excl. Engine)	1840 kg (4056lbs)	Fuel consumption, cruise	250 nm (2x 300hp Mercury V8, 30 knots)
37 XC Cross Cabin - Weight (excl. Engine)	1940 kg (4277lbs)	Hull design	Twin stepped 22 degree V "Sharp entry hull"
Passengers	B:10 - C:12		

* Only w. optional aft cabin

Specifications may be changed without prior notice. Performance may vary due to equipment, weather and load conditions.

STANDARD EQUIPMENT

General: Hand laminated hull in Vinylester resin for the first coat for osmosis prevention of the hull in GRP material, Twin-stepped hull w. "sharp entry bow", Integrated engine bracket in hull for outboard engines, Fixed aluminum fuel tank 730l w. overflow prevention, Freshwater tank 100l, Heavy-duty rub rail w. rubber end caps in grey, Heavy-duty rub rail around swim platforms, Axopar 3D signature chrome logo on both sides of hull, Bow thruster tunnel preparation in hull, Walkaround deck layout w. open aft deck, Anti-skid finishing on working deck areas and deck hatches, Self-draining deck area w. quick drain aft deck, All hardware, pulpits, locks, hinges, filler caps & cockpit grab rails in 316 stainless steel, 8 x cleats on aft, midships and fore deck, Additional hooking points for safety harness around side deck areas, Fore deck pulpits, short, LED navigation lights on fore deck, Spacious anchor locker w. drainage in bow, Rope holders in anchor locker on fore deck & fender storages, Sofa w. backrest on fore deck incl. harbor cover, Large skylight w. harbour cover, Flush mounted 2 x skylights incl. harbor cover, Curved & toughened glass wrap-around windscreens and side windows in light green tint w. illuminated 37 signature, Fully enclosed cabin w. extra wide & lockable sliding doors, Roof structure in white GRP w. large opening canvas roof, Harbour cover for opening canvas roof, 2 x integrated & interlinked windscreen wipers, Windshield washer w. separate reservoir, Grab rail under coach roof on aft deck, Integrated boarding steps on both sides of helm, Foldable light mast in white painted aluminium w. anchor light, Twin large fender storages on aft deck w. insulation /cooler boxes, Aft deck w. large storage compartment, Battery / electrical compartment under aft deck storage, Flaggpole, Signal horn, Two electric bilge pumps w. auto-function, Manual bilge pump for aft deck section, Trim-tabs w. joystick control, Integrated swim platforms and telescopic bathing ladder.

Helm: Clean - Helm layout, Dashboard & console top panels in dark grey soft touch finish, Center console panels in black high-gloss finish, Control switch panel in glass w. illuminated push buttons, Main control panel w. remote controlled battery switches, Steering wheel in leather w. Axopar logo, Lockable access hatch to front cabin w. grab rail in leather, Sliding door to front cabin in dark grey soft touch finish, Cup holder on dashboard, Splash proof USB outlet in console wall, Document pocket on console wall, Footrest in stainless steel & support w. Axopar logo, 2 x LED deck lights in helm floor.

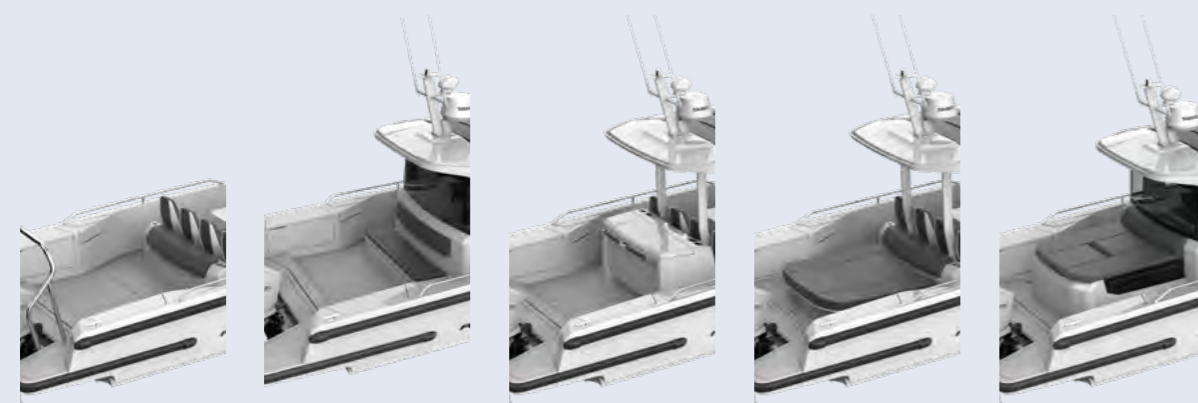
Cockpit (S/ST): Large sociable seating area w. seven sports seats w. mid section in diamond pattern stitching, Rotating & length adjustable front seats w. flip-up bolster, Extendable table w. fixed height in white GRP, Threshold free aft cockpit area, Storage compartment under centre aft seats, Aft-facing cushioned perch behind seating area, 2 x storage compartments under cockpit table, Grab rail under roof above cockpit table, 6 x recessed LED roof lights, 2 x LED deck lights in cockpit floor, Silvertex Sterling on all seats and upholstery, Harbour covering for helm and front seats, Harbour covering for aft seats, Harbour cover for cockpit table.

Pilothouse (XC): Front seats, rotating & length adjustable w. flip-up bolster, Large L-shaped lounge sofa w. cushions, Foldable and adjustable cockpit table in wenge, Cup-holders under rear window x 4, Raised floor level around L-sofa and entry-way thresholds in wenge, Large storage under centre seat / aft sofa, Storage under Lsofa couch, Port side, Storage locker under raised floor, Small storage pocket on Port side side w. cupholders, Storage pockets w. fabric lining on sliding doors, 2 x roof grab rails, 4 x recessed LED roof lights, 2 x LED deck lights in pilothouse floor, Fire & CO2 alarms, Silvertex Sterling fabric on all seats and upholstery, Curved roof panels in Vintage Steel fabric, Carpet in black.

Front Cabin: Front cabin w. L-shaped lounge sofa & seating, Large queen size bed w. soft side bolsters, All upholstery in Torres Grey fabric, Roof panels in Vintage Steel fabric, Portlight towards fore deck w. openable hatch, Mirror in forward bulkhead, 2 x foldable wooden shelves beside the bed, Cabinet upholstered in Vintage Steel fabric w. wenge top, Mirror above cabinet, 4 x pop up clothes hangers, Built-in electric flush toilet under L-sofa w. septic tank 70l and deck/hull outlets, Main 12V fuse panel w. automatic fuses, 12V & USB outlet in front cabin, Fire & CO2 alarms, 6 x LED roof spotlights, LED roof light strip between skylights, Two manual "mushroom" roof vents, Carpet in black.

LAYOUT ALTERNATIVES FOR AFT DECK

The modular nature of Axopars, and our multi-platform thinking, enables you to extensively customize your boat with a plethora of aft deck options and layouts. The Axopar 37 Spyder & Sun-Top come with a spacious open aft deck, equipped with an aft facing perch as standard, while the Axopar 37 XC Cross Cabin has a fully open aft deck.



Spyder / Sun-Top w. standard open aft deck & aft facing perch

XC Cross Cabin w. aft bench

Optional wet bar

Optional multistorage compartment

Optional aft cabin



Spyder / Sun-Top w. standard aft facing perch



Spyder / Sun-Top w. multistorage compartment & toilet compartment



XC Cross Cabin w. aft cabin & comfort package

THE AXOPAR 28 RANGE

Axopar 28 Range Highlights	Page 38
Axopar 28 Cabin	Page 40
Axopar 28 T-Top	Page 52
Axopar 28 Open	Page 62

**CREATE YOUR
OWN ADVENTURE**



THE AXOPAR 28 RANGE JUST GOT EVEN BETTER

The best just got even better for 2021 with myriad improvements and upgrades, based on extensive testing and customer feedback. We strive to keep enhancing overall comforts, fine-tuning features to make them even better, often focusing on things that can't immediately be seen, but are very soon evident once you are onboard; and all of this is to keep providing you with the best value for your money.

TOP 10 UPDATES FOR MODEL YEAR 2021:

- New driver's console
- Multi-functional Glass Helm Simrad Information Display 2 x 12" (optional)
- Simrad navigation technology
- The swim platforms have increased in size
- Additional rub rail around the edge of swim platforms
- New high-handle ladder for easy boarding from water (optional)
- New roof design with integrated gunwales
- Roof rack for carrying extra gear and outdoors equipment (optional)
- New front seats & aft sofa design
- Lowered seat bases for improved ergonomics and easier movement



AXOPAR 28 CABIN

Less sportsboat, more Gran Turismo, the Axopar 28 Cabin opens up a world of possibilities for extended voyages and longer average journey times, and with the option of an Aft Cabin, this is our biggest selling model so far.

With the capacity to seat up to five people within a bright and airy, full weather-protected environment, there's ample incentive for an owner and guests to spend, not just a few hours onboard, but several days and even weeks, enjoying their Axopar 28 Cabin to the full. The cabin does offer occasional sleeping possibilities for one or two, but customers find the Aft Cabin option is an even better solution for genuinely comfortable, dedicated overnight stays and spontaneous weekends away, which will soon become your boating norm.

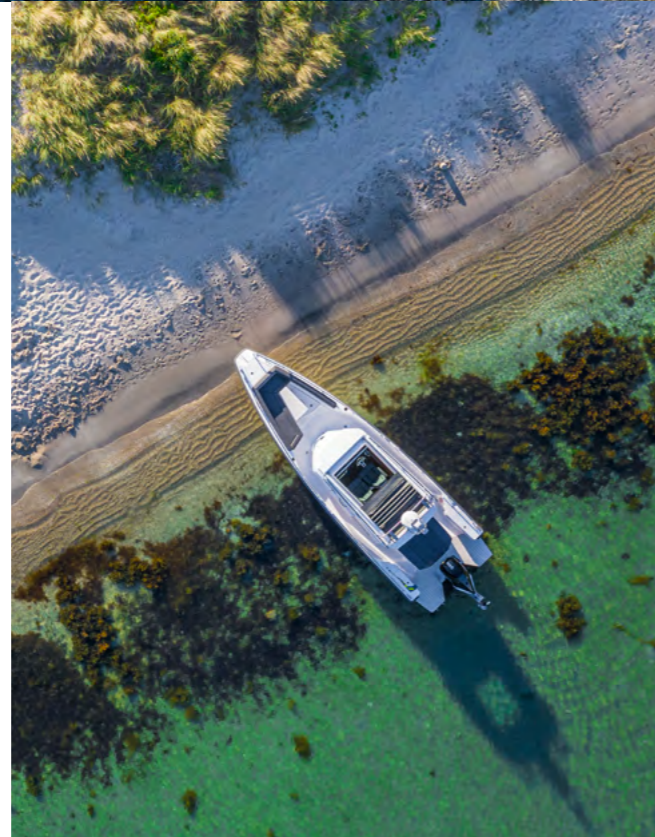
Versatile by design, the walkaround side access and aft-deck (in standard form) is a large, flat and practical space that works well as a platform for fishing, or water-sports activities and such-like. As with other models across our ranges, the aft-deck can be configured either with, or without, an additional rear-facing bench seat and storage box, or for all-day hospitality our dedicated drinks serving area and wetbar module option is a must. Go further and stay out longer with the Axopar 28 Cabin.





A clean and modern looking console, with an optional full-glass, bespoke graphic user-interface screen. The Simrad IDS system (Dual 12"), is an integral aspect of the boat's overall design. Driver focussed, it offers integrated vessel start-up check, eco/sport driving modes with active driving-assist features, entertainment and media control and monitoring via a simple touch-screen display.

The 80cm/2ft 8in shallow draft enables access to all kinds of new places and offers the possibility to discover hidden beaches, bays and idyllic anchorages.



The Axopar 28 Cabin is a multifunctional craft with modern, smart lines, which is fully enclosable for all weather conditions, yet open for warm and sunny summer days. It features a spacious, bright, comfortable cabin with wide sliding doors and a large sliding canvas roof. For spontaneous overnights, the sofa inside the cabin converts into a double bed.





Picture presented with pre-face-lifted MY20 model.

Our wide choice of optional extras lets you configure your new Axopar to fulfil your ideal needs. Shown here, nestled conveniently inside the cabin, is the freshwater system with sink & faucet, and top loading refrigerator.



Perfect for an early morning coffee, light lunch or early evening sundowner, the foredeck with L-shaped sofa and optional table is a perfect place for sitting back and enjoying every moment.

The driver and co-driver seats can be turned to face the sofa for entertaining guests at the optional table. This is a perfect place to socialize and enjoy lunch or a cup of coffee with your friends.



Our optional toilet package, located centrally in front of the main console, is an ideal and convenient addition for those who love spending as much time as possible on board during the day and night.



Aft deck options shown here include a fully plumbed Wet Bar module, or an Aft Cabin with versatile stowage hatch (seen with and without cushions). There's also an option for a rear-facing bench/storage box, or to leave the entire aft-deck space completely clear.

AXOPAR 28 T-TOP

Sometimes having too much sun can be even more unpleasant than not having enough, which led Axopar to design a smartthinking T-Top with large, canvas roof shade, mounted to a sturdy, permanent metal frame.

This is a highly versatile, multi-purpose, walkaround sports cruiser, where form & function have been fused together to create the Axopar 28 T-Top, successfully screening the front and rear passengers from the less pleasant effects of too much sun. Knowing you and your guests can now spend even more time on the water, means options such as the toilet, washhand basin and top-loading fridge, for example, are the kind of useful upgrades Axopar offer to make life afloat that little bit more civilized.

Ideal for those who live too far away from their boat to want to return home each night, or perfect for those impromptu weekends away with your spouse or partner, our Aft Cabin option allows comfortable overnight sleeping accommodation for two, with the same space doubling as significant extra stowage when not in use as accommodation. All day long hospitality is no problem at all when you have a dedicated drinks serving area. Our fully plumbed-in wet bar module is a clever touch that's bound to impress your friends with an end-of-day sundowner, or day-long supply of your favourite ice-cold beer!





Picture presented with pre-face-lifted MY20 model.

The aft cabin sundeck is the perfect place to relax and soak up the sun with friends, with ample space to access both swim platforms for a refreshing dip in the water.



Picture presented with pre-face-lifted MY20 model.



With the foredeck, the cockpit and the aft-deck to consider, the T-Top's incredible use of space provides three different sociable zones to enjoy at any time of the day.

A foredeck sun shade extends the available space for lounging on board whilst remaining protected from the harsh heat, and is easily assembled, disassembled and stored away when required.



Picture presented with pre-face-lifted MY19 model.

The Axopar 28 T-top is the ultimate leisure boat for trips to your favourite anchorage, for water sports, for sunbathing or for just relaxing with friends and family. This sleek walk around cruiser, with a canvas T-Top, features a smart optional aft cabin for two that doubles as a large sun deck and sets the stage for all on-water activities.



Picture presented with pre-face-lifted MY19 model.



The BRABUS Line Trim Package includes, for example, a suede covered steering wheel and suede covered co-pilot grab rail with discreet BRABUS logo branding. The exterior features black rub rails, BRABUS Line signature branding and all main exterior stainless-steel parts specific to each model (eg handrails, light mast, T-Top roof mounts etc) are finished in a matching black painted colour scheme.



Picture presented with pre-face-lifted MY18 model.

AXOPAR 28 OPEN

A perfect choice, even for those who have never even considered buying an 8m motorboat up until now. The user-friendly characteristics, combined with its safe & responsive nature, make the Axopar 28 Open version an ideal first-time buy.

Six comfortable, forward-facing seats in two rows, with individual bolster cushions for the front row, offer more pleasurable views than boats with side-facing equivalents, and the view ahead means that everyone onboard will see, feel and experience the same kind of exhilaration as if each person was sitting behind the steering wheel!

There's plenty of aft-deck space, combined with additional stowage, making this model one of the most versatile and practical options within our range. Use the Open version either as a family-fun tool for exploring beautiful coastlines and cruising undiscovered bays, or as an exciting dive-excursion boat, a wakeboarding or water-ski boat, or simply for blasting offshore to your favorite fishing reef. And from an ultra-pleasant day-cruiser to an über-cool sports weekender, why not transform your leisure boating options in an instant, by specifying our aft-cabin, comfortable overnight accommodation package? With Axopar the final choice is always yours!



Whether it's for a siesta mid-way through the day, or those occasions when you want the convenience of sleeping on board overnight, the Aft Cabin option is a wonderful refuge at any time.



The Axopar 28 Open is a spacious, walk-around day cruiser with unmistakable style, combined with an agile and fuel efficient hull. This versatile and easy to handle craft has plenty of room, thanks to its spacious configuration for sunbathing, watersports, fishing, socialising or just cruising the coast.

All picture presented on this spread are from a pre-face-lifted MY18 model.



With cushions removed, the top of the Aft Cabin provides a practical work top for preparing your watersports gear or fishing tackle in readiness for another fantastic and memorable Axopar day.



Many of us lead busy and hectic lives and our free time is a precious commodity. That's why everything about an Axopar has been designed to let you get the most from your valuable time spent on the water.



28 RANGE SPECIFICATIONS

TECHNICAL SPECIFICATIONS

Overall Length (excl. Engine)	8,75 m (28ft 8in)	Berths	2 persons
Overall Length incl. Bathing Platforms	9,18 m (30ft 1in)	Fuel capacity	280 l (74 gal)
Beam	2,95 m (9ft 8in)	Construction	GRP
Height (Waterline to Roof incl. Light Mast)	2,83 m (9ft 3in)	Classification	B – Offshore / C – Coastal
Draft to props	0,80 m (2ft 8in)	Max speed range	32–46 kts
28 Open - Weight (excl. Engine)	1770 kg (3902lbs)	Outboard engines	200 – 400 hp
28 T-top - Weight (excl. Engine)	1840 kg (4056lbs)	Fuel consumption, cruise	1.75 l / nm (350 hp @ 30 knots)
28 Cabin - Weight (excl. Engine)	1940 kg (4277lbs)	Hull design	Twin stepped 22 degree V “Sharp entry hull”
Passengers	B: 6 persons / C: 9 persons		

Specifications may be changed without prior notice. Performance may vary due to equipment, weather and load conditions.

STANDARD EQUIPMENT

General: Hand laminated hull in Vinylester resin for the first coat for osmosis prevention of the hull in GRP material, Twin-stepped hull w. "sharp entry bow", Integrated engine bracket in hull for outboard engines, Fixed aluminum fuel tank 280l w. overflow prevention, Fuel sensor Vema, Heavy-duty rub rail w. rubber end caps in grey, Heavy-duty rub rail around swim platforms, Axopar 3D signature chrome logo on both sides of hull, Bow thruster tunnel preparation in hull, Walkaround deck layout w. open aft deck, Anti-skid finishing on working deck areas and deck hatches, Self-draining deck area w. quick drain aft deck, Self-bailing cockpit & helm area, All hardware, pulpits, locks, hinges, filler caps & cockpit grab rails in 316 stainless steel, 6 x cleats on aft, midships and fore deck, Additional hooking points for safety harness around side deck areas, Side rails, Spacious anchor locker w. drainage in bow, L-shaped Sofa w. backrest on fore deck incl. harbor cover, Cupholders on both sides of the L-sofa in bow, Toughened glass windscreen and side windows in light green tint w. illuminated 28 signature, Fully enclosed cabin w. lockable sliding doors, Roof structure in white GRP w. large opening canvas roof, Harbour cover for opening canvas roof, Heavy-duty pantograph windscreen wiper, Twin fender storages on aft deck w. insulation /cooler boxes, Aft deck w. storage compartment, Lightmast, removable, Flagpole, Signal horn, Two electric bilge pumps w. auto-function, Manual bilge pump for aft deck section, Integrated swim platforms and telescopic bathing ladder, Integrated LED navigation lights.

Helm: Clean Helm-layout, Dashboard & console top panels in dark grey soft touch finish, Center console panels in black high-gloss finish, Helm panel with passenger side grab rail, Control switch panel in glass w. illuminated push buttons, Steering wheel in leather w. Axopar logo, Main control panel with twin battery switches and automatic fuses for direct supply, Cupholders on dashboard x2, 12V power outlet on dashboard.

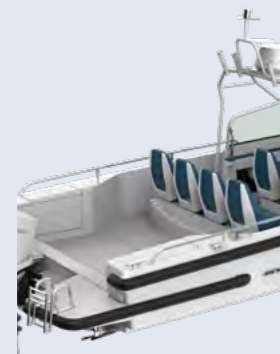
Cockpit (Open/T-Top): 2 x front and 3 x cockpit seats, rotating & length adjustable w. flip-up bolster, Silvertex Sterling fabric on all seats and upholstery, Storage compartment under centre aft seats, Document pocket on console wall, Stainless steel footrest, Lowered floor level at helm section, 2 x LED deck lights in helm floor, Led roof spotlights 2pcs, Harbour cover for helm and front seats, Harbour covering for cockpit seats.

Pilothouse (Cabin): Front seats, rotating & length adjustable w. flip-up bolster, Silvertex Sterling fabric on all seats and upholstery, Cupholders under rear window x2, Document pocket on console wall, Aft sofa w. cushions, Walnut foot rest, Lowered floor level at helm section, 2 x LED deck lights in helm floor, Led roof spotlights 4pcs, Carbon monoxide detector in cabin, Fire alarm in cabin.

Front deck stowage area/toilet: Enlarged stowage area in center console / optional toilet with raised interior finish with headliner and toiled door in double mold integrated window, varnished oak back panel with integrated mirror, 2 LED spotlights in deck stowage / toilet, Main fuse panel with automatic fuses and 12V outlet located in deck stowage / toilet area.

LAYOUT ALTERNATIVES FOR AFT DECK

The modular nature of Axopar, and our multi-platform thinking, enables you to extensively customize your boat from a plethora of available aft deck options and layouts. The Axopar 28 range comes with a spacious open aft deck as standard.



Standard open aft deck



Cabin w. aft bench



Optional wet bar



Optional aft cabin



Open w. wet bar & targa arch with lightmast incl. rodholders



T-Top w. standard open aft



Cabin w. aft cabin & electric flush toilet

A LAUNCH LIKE NO OTHER! AXOPAR 22 SPYDER WORLD PREMIERE

AXOPAR 22 SPYDER

We have expanded our fleet of premium boats to the competitive 22-footer market with a product that, together with fantastic value for money, represents all the key unique features and functionalities that define a true Axopar.

The phenomenal new Axopar 22 range was launched to the world in December 2020 with typical Axopar flair and panache, exploding onto the marine market like a firework display in the night sky! The über cool Train Factory building in Helsinki was picked as the perfect location for broadcasting the first livestreamed product launch in the history of Axopar.

Waiting to be unveiled under cloth were the incredible new Axopar 22 Spyder, in crisp white, on a trailer behind a stunning new Land Rover Defender, and the crown jewel of the collection – the stunning Axopar x Jobe Revolve XXII in jaw-dropping turquoise.

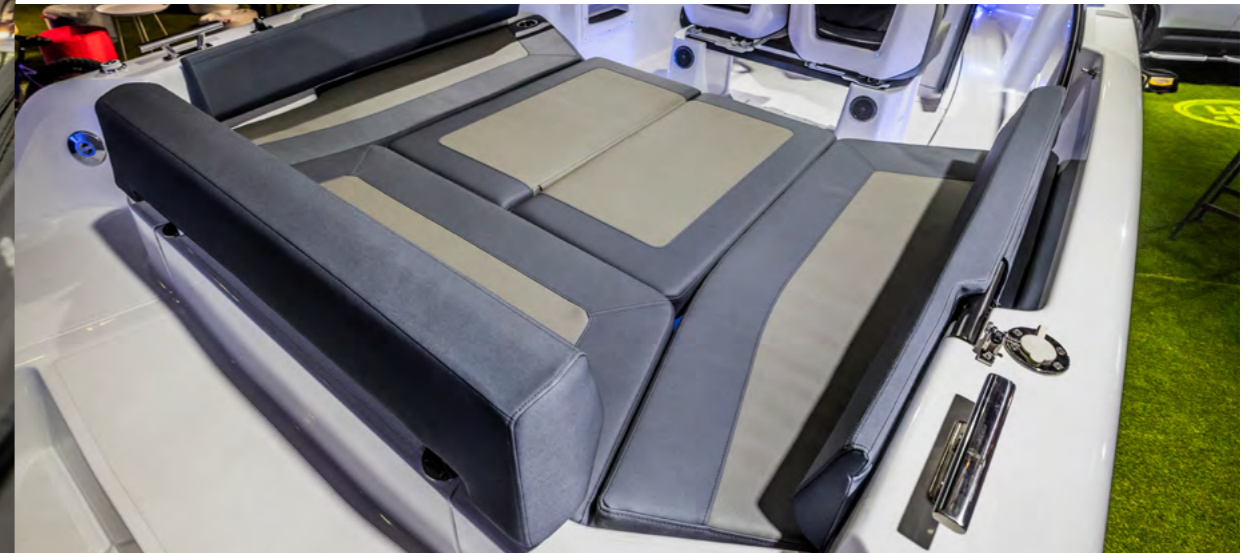
The cool-looking Axopar 22 Spyder is a true driver's boat, offering first-in-class handling, seaworthiness and safety, combined with the efficiency and comfort that its bigger 28ft and 37ft siblings are renowned for. A smart boat that packs a punch and will turn heads wherever you go, and all without breaking the bank!





The multifunctional U-sofa layout on the aft deck is an ideal space to comfortably seat up to 6 adults, with a table that provides ample space for al fresco dining.

Simply drop the optional additional sun bed cushions into place to create a wide sun pad that serves as a spacious, comfortable area to bask in the warm sun with a cold beverage.



Our eye-grabbing hull not only looks good and retains that special Axopar aesthetic, but it has been painstakingly designed to maximize hull width, for improved stability and drivability, resulting in the most stable 22-footer possible. A large flare at the bow ensures buoyancy in rough conditions, and the typical Axopar chines and double-step hull combine to give lift and minimize drag.

The development of this hull, the most complex ever designed and manufactured by Axopar, results in a boat that not only inspires confidence in a beginner, but one that will also impress experienced boaters.

Both the driver and co-driver seats can be turned to face the sofa for entertaining guests at the optional table. This is a perfect place to socialize and enjoy a lunch or cup of coffee with your friends.





In just a few short moments, you'll feel relaxed, at ease and fully in-control behind the wheel of an Axopar. Responsive handling and safe mannerisms make driving this as simple and as intuitive as if behind the wheel of a modern-day car.



By implementing a classic Axopar hull in a smaller size, the outcome is a boat that is easy to manoeuvre in tight spaces with minimum windage impact.



The Axopar 22 Spyder is capable of commuting comfortably in changeable conditions and remains predictable and logical in its behaviour, no matter what weather conditions are thrown at it!





AXOPAR X JOBE
A TOTAL WATER SPORTS
EXPERIENCE





AXOPAR X JOBE REVOLVE & REVOLVE XXII

Axopar and Jobe Sports present the first partnership to produce a boat range specifically tailored to its matching water sports products. Our shared passion for fun on the water, innovation, knowhow and our years of experience have allowed us together to create one of the best water sports concepts in the leisure marine industry.

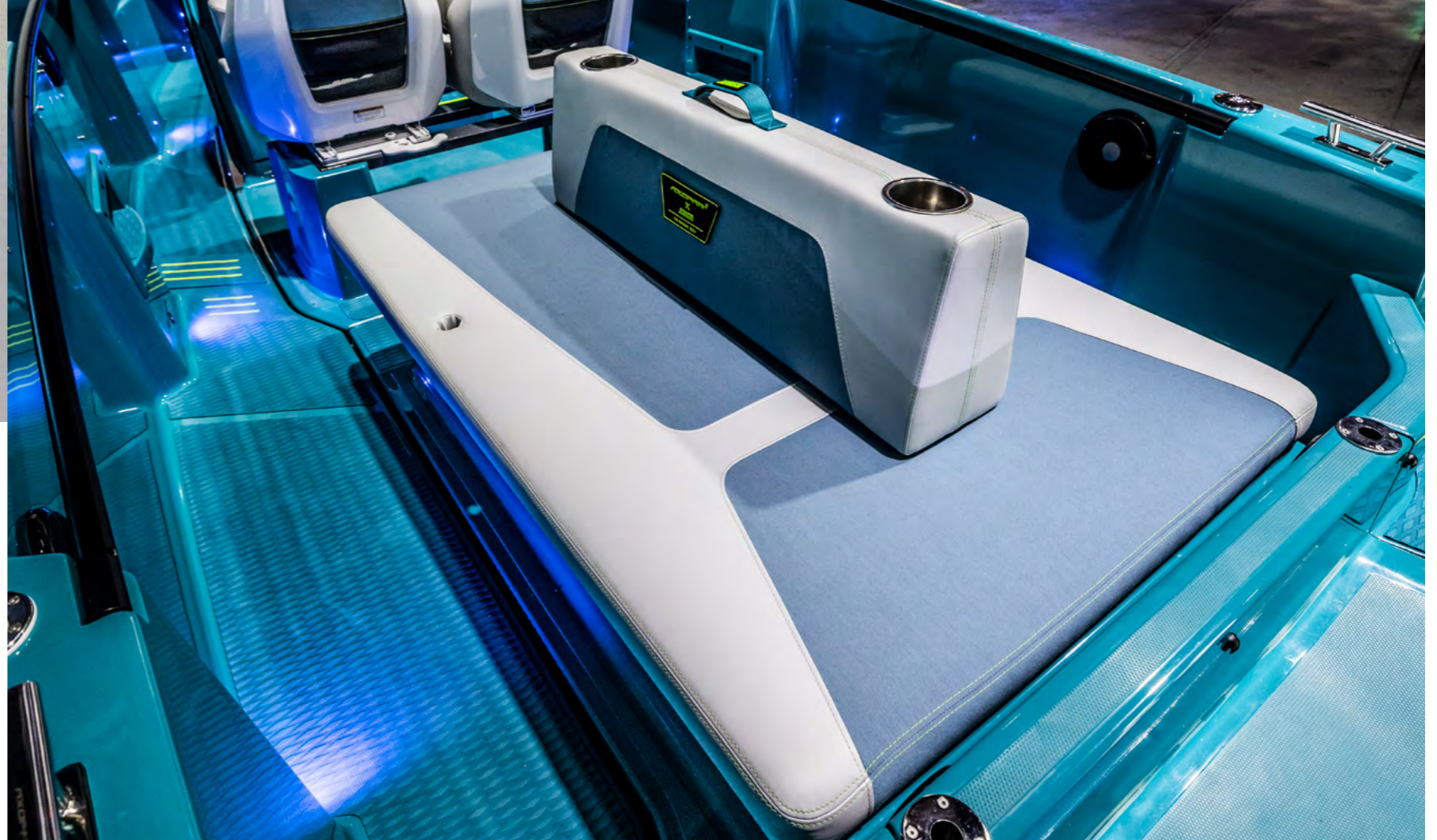
The Axopar x Jobe Revolve, and its flagship model the Revolve XXII, are based upon the Axopar 22 Spyder, representing the results of a long-term, in-depth design and manufacturing collaboration between the Axopar and Jobe families - a partnership guaranteed to extract the maximum amount of fun and pleasure from being on the water.

The Axopar x Jobe Revolve makes an unmistakable impression, with its white hull and Jobe graphics package, featuring neon green detailing and further complemented by extensive interior detailing in turquoise, filled with Jobe detailing and touches.

For those searching for the ultimate Jobe experience, the unforgettably named flagship REVOLVE XXII comes with a custom-made, hand-painted special turquoise colour throughout the whole boat, accompanied by an extended full-size 'Revolve' hull-wrap graphic.



Axopar x Jobe Revolve boats have a striking and vibrant colour scheme, graphics and patterns seen extensively across all detailing, custom-made elements and on the Jobe products that are delivered as standard with the boat. These features immediately 'interconnect' Axopar and Jobe seamlessly together.



The multistorage compartment allows you to bring all of your water toys with you for your adventures, and makes for a perfect sun lounge on the aft deck. The back rest works in three different positions.





The Axopar X Jobe foredeck hammock is a compact solution that lets you quickly and easily transform your foredeck into a perfect sun lounging space. Kick back and relax in the sun after a fun afternoon of water sports or island hopping, but don't be surprised if your children won't let you have a turn! When you're finished, just unhook the straps, roll the hammock up and store it with minimal fuss.



Lose yourself in the stunning design and details; whether you have chosen the eye-catching neon green and turquoise graphics on a white Revolve hull, or the fully turquoise masterpiece that is the Revolve XXII.

Each Revolve boat features an array of incredible aesthetic details that celebrate the combined craftsmanship of Axopar and Jobe, including rubber badges on the anchor locker hatch and graphics on the outer hull.

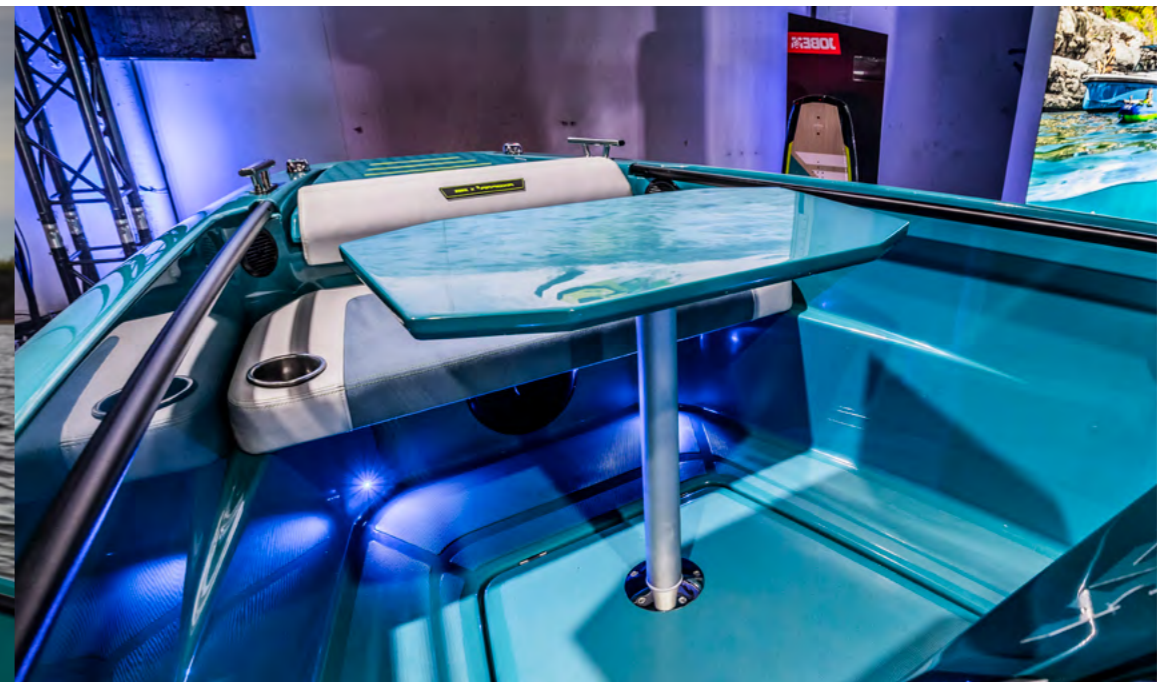
The non-slip EVA deck pads from Jobe's highest quality SUP boards work as deck material on Revolve boats. This durable material is a perfect choice for added grip, comfort and a warm feeling underfoot on the boat, finalizing that Jobe "touch".





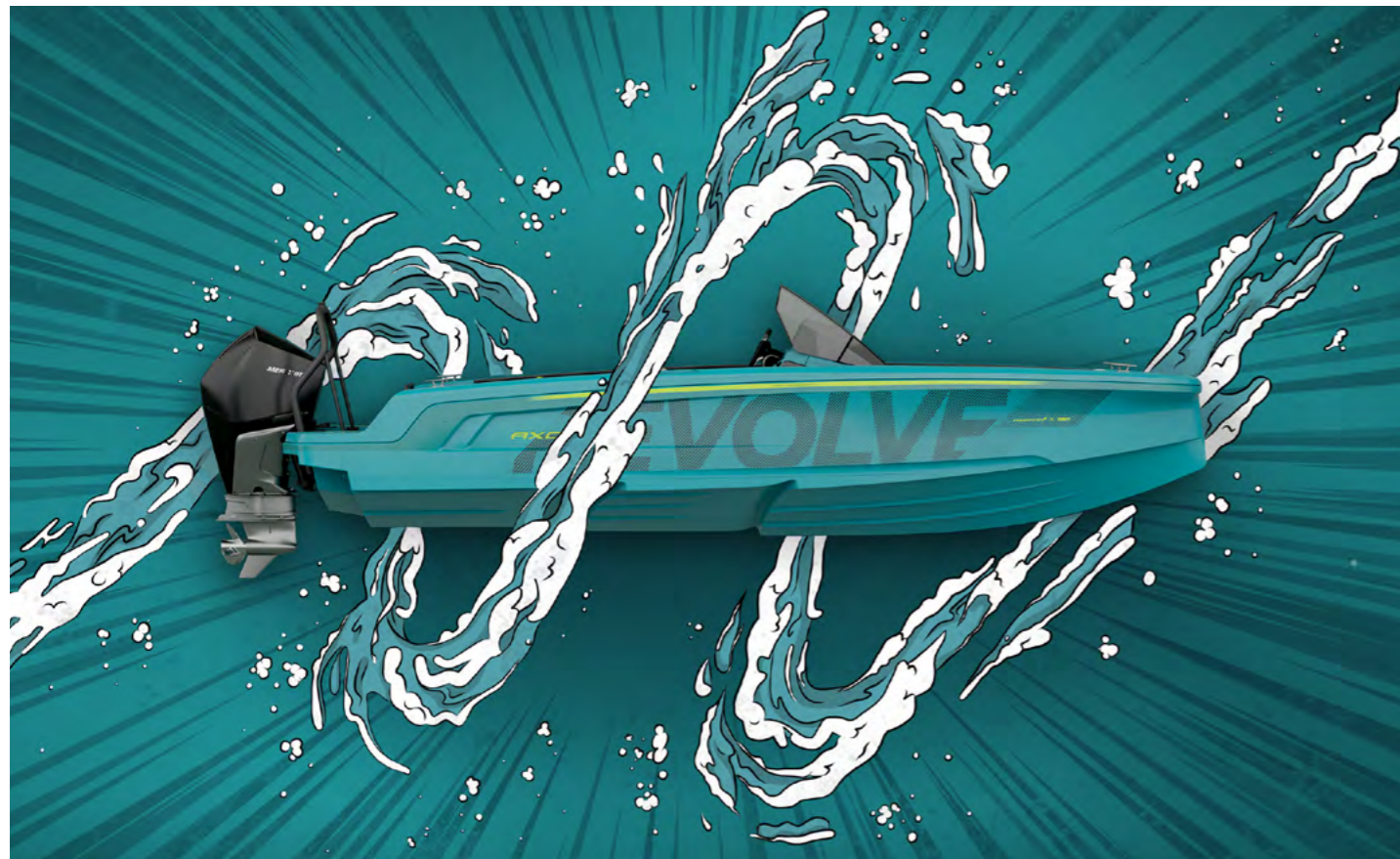
Picture presented with Axopar 22 Spyder & Axopar x Jobe Revolve

Enjoy supreme comfort and convenience with separate driver's and co-driver's seats, featuring 180° swivel function and flip-up, high-rise bolsters for a raised driving position for occasions when maximum visibility is required. The angle of the windscreen is also adjustable, giving full protection while you are seated, and also allowing you to raise the top of the windscreen higher for protection while driving in a standing position.



There is ample space in the bow to create a relaxing social space that won't inconvenience your guests using the aft deck for other purposes. Relax with a cold drink on the optional front deck seat with backrest, or add the optional bow table and forward-facing console bench to perfectly host a family lunch in the fresh, open air.

Unique new water sports gear has been exclusively developed and manufactured for the Revolve models; for example the custom-made Peak towable water toy that fits perfectly inside the bow area underneath the foredeck seating.



AXOPAR X JOBE

AXOPAR X JOBE EDITION

REVOLVE

Neon green and turquoise Jobe graphics package on white hull incl. Jobe detailing and Axopar X Jobe 'EXPERIENCE' product package.

REVOLVE XXII

Hand painted special turquoise gelcoat colour incl. extended Jobe graphics package with full size hull wrap. Jobe detailing and Axopar X Jobe 'EXPERIENCE' product package.

ADDITIONAL PACKAGES & OPTIONS

AXOPAR X JOBE EXPLORATION PACKAGE

1 x Allegro Combo Lime Green Water Skis, 1 x Sentry Kneeboard, 1 x Vanity Wakeboard & Host Binding, 1 x Manta Carpet water toy, 2 x ropes & handles

JOBE DETAILING & AXOPAR X JOBE 'EXPERIENCE' PRODUCT PACKAGE

standard in Revolve & Revolve XXII

Axopar x Jobe seats and cushions
Silvertex Aluminium and Turquoise with detailing in neon green colour

Axopar x Jobe EVA decking

Axopar x Jobe detailing

Axopar 3D hull logo letterings in neon green

Axopar X Jobe 'EXPERIENCE' Package
2 x Dual Vest Lime Green life vests, 1 x Aero Yarra Teal SUP board, 1 x Peak towable water toy, 1 x tow rope for towable, 1 x Axopar X Jobe fore deck Hammock, 1 x Air pump 12V, 1 x gift card



22 SPYDER SPECIFICATIONS

TECHNICAL SPECIFICATIONS

Overall Length (excl. Engine)	7,2 m (23ft 7in)	Construction	GRP
Beam	2,23 m (7ft 4in)	Classification	C - Inshore
Draft to props	0,80 m (2ft 8in)	Max speed range	up to 45 knots
22 Spyder - Weight (excl. Engine)	1200 kg (2650 lbs)	Outboard engines	115 - 200 hp
Passengers	C: 7 persons	Fuel consumption, cruise	1,0 l / nm (1 x 200hp Mercury, 27 knots)
Fuel capacity	230 l (60 gal)	Hull design	Twin stepped 22 degree V "Sharp entry hull"

Specifications may be changed without prior notice. Performance may vary due to equipment, weather and load conditions.

STANDARD EQUIPMENT

Hull & deck features: Walk-around center console deck layout w. enclosed aft deck, Large center console w. storage/optional toilet compartment, Mid sofa w. lockable storage below on aft deck, Hand laminated hull with Vinylester resin for the first coat for osmosis prevention of the hull in GRP material, Twin-stepped hull w. "sharp entry bow", Integrated engine bracket in hull for outboard engine, Fixed aluminum fuel tank 230l w. overflow prevention, Anti-skid finishing on deck areas and hatches, Selfdraining deck area w. quick drain aft deck, All hardware, locks, hinges, filler caps & grab rails in 316 stainless steel or powder coated black, 4 x cleats, Bow & stern eyes 316 stainless steel, LED navigation lights on fore deck, removable anchor light, Spacious anchor locker w. drainage in bow, Rope holders in anchor locker on fore deck & aft sofa, Windscreen in plexi glass w. black rasterization, wind deflectors on center console, In floor fore deck storage, Large in floor aft deck storage compartment w. gas strut assisted hatch, Storage on side panels, Battery tray w. mount & splash proof main fuses in aft sofa storage, Signal horn, Two electric bilge pump w. auto-function, Manual bilge pump, Integrated swim platforms and concealed telescopic bathing ladder.

Helm & Cockpit features: Clean - Helm layout, Dashboard panel in dark grey soft touch finish, Control switch panel in high gloss black w. illuminated push buttons, Steering wheel in leather w. Axopar logo, Two front seats, w. swivel, length adjustable w. flip-up high-rise bolster, Silvertex Sterling on all seats and upholstery, Two beverage holders, Splash proof USB outlet in the console, Threshold free cockpit area, Footrest with anti-skid finishing, Large harbour cover for console and front seats.

Certifications: Meets applicable USCG & ABYC standards, Meets applicable European CE standards, NMMA certification.

LAYOUT ALTERNATIVES FOR AFT DECK

The modular nature of Axopar, and our multi-platform thinking, enables you to extensively customize your boat from a plethora of available aft deck options and layouts. The Axopar 22 Spyder comes with a spacious open aft deck with a comfortable bench as standard. You can further opt for a sociable U-sofa layout or a multistorage compartment to stow your water sports gear.



Standard open aft deck



U-Sofa configuration



Multistorage compartment



Spyder w. standard open aft incl. aft sofa



Spyder w. u-sofa configuration & forward facing console bench & bow table



Spyder w. multistorage compartment

THE BRABUS LINE TRIM PACKAGE

For 2021, the BRABUS Line Trim Package includes unique cockpit and cabin seat designs with diamond-stitched patterning, a suede-covered steering wheel and suede-covered co-pilot grab rail with discreet BRABUS logo branding. The exterior of the hull features black coloured rubrails and all main exterior stainless-steel parts specific to each Axopar model (eg. hand-rails, light mast, T-Top / targa arch) will be finished in a matching black painted colour scheme.

The BRABUS Line Trim Package can be further enhanced by selecting one of our two exciting hull & roof colours: Choose from vibrant and playful Miami Blue, or a more discreet Platinum Grey. The Colour Edition is a duo-tone colour package, whereby specific parts of the boat are coloured and other parts are left uncoloured in standard delivery white.



AVAILABLE HULL COLORS

AXOPAR 37 RANGE



Axopar 37 Spyder
Standard White



Axopar 37 Sun-Top
Miami Blue



Axopar 37 XC Cross Cabin
Platinum Grey

AXOPAR 28 RANGE



Axopar 28 Open
Standard White



Axopar 28 T-Top
Miami Blue



Axopar 28 Cabin
Platinum Grey

AXOPAR 22 RANGE



Axopar 22 Spyder
Standard White



Axopar x Jobe Revolve
White w. Neon green & Turquoise graphics package.



Axopar x Jobe Revolve **XXII**
Hand painted special Turquoise gelcoat colour incl. extended Jobe graphics package w. full size hull wrap.

FABRIC COLORS

For the Model Year 2021, Axopar models are available in Silvertex marine, quality coated fabrics in the colours below. Sterling is standard in all MY2021 boats with Champagne, Storm and Turquoise as optional fabric colours.



Sterling



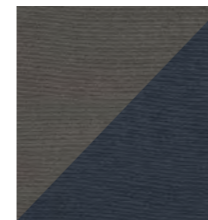
Champagne



Storm



Turquoise



Sterling / Storm
Only for 22 Spyder



Aluminium / Turquoise
Only for Axopar x Jobe

AXOPAR AWARDS

Axopar is well known for its hugely successful, multi-award winning range of premium motorboats. Below we have gathered some of the awards that our brand have received



Beyond The Horizon

BEYOND THE HORIZON

We are excited and privileged to be a part of this project, where the Powerboat & RIB magazine team in the UK will be taking out the Axopar 28 Cabin on fantastic adventures along the coastlines of the UK and Ireland.

The main goal is to attract new boaters and build confidence in existing boaters to explore beyond the horizon, experience new scenery and collect lifelong memories. There will be 12 episodes broadcast throughout 2021, each accompanied by a series of tuition videos and an adventure travel blog, featured both online and within the Powerboat & RIB Magazine; giving you a reference guide to plan your own adventures!

Scan the QR code to watch the introduction video:





JOUNI, PRODUCT MANAGER



FRANZ, PRODUCTION DIRECTOR



MIKAEL, CEO



MARKO, LOGISTICS MANAGER



MIKAEL, COMMERCIAL DIRECTOR



JAN-ERIK, FOUNDING PARTNER

THE ADVENTURE COMPANY

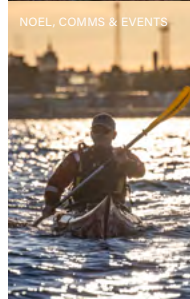
Everyone working at Axopar shares a love of boating, combined with a deep passion for the great outdoors. Some have grown up around sail and motorboats of all shapes and sizes, and others are new to boating.

We are a mix of international professionals, each with our own devotion to sports, adventure and outdoor activities, spending our free time recharging in nature. By opening our eyes to new ways of thinking, sparking innovation and finding new influences, we are able to develop new solutions and features that we can infuse into our boats, all to provide you with the best adventure vessel.

Developed for adventure, by adventurers.



ANNA, STRATEGIC BUYER



NOEL, COMMS & EVENTS



CHRISTIAN, SENIOR MARKETING SPECIALIST



DAN, CONTROLLER



HENNA, MARKETING MANAGER



MAGDALENA, EXECUTIVE COORDINATOR



NIKO, SUPPLY CHAIN DIRECTOR



Find your local Axopar dealer at www.axopar.fi/dealers

